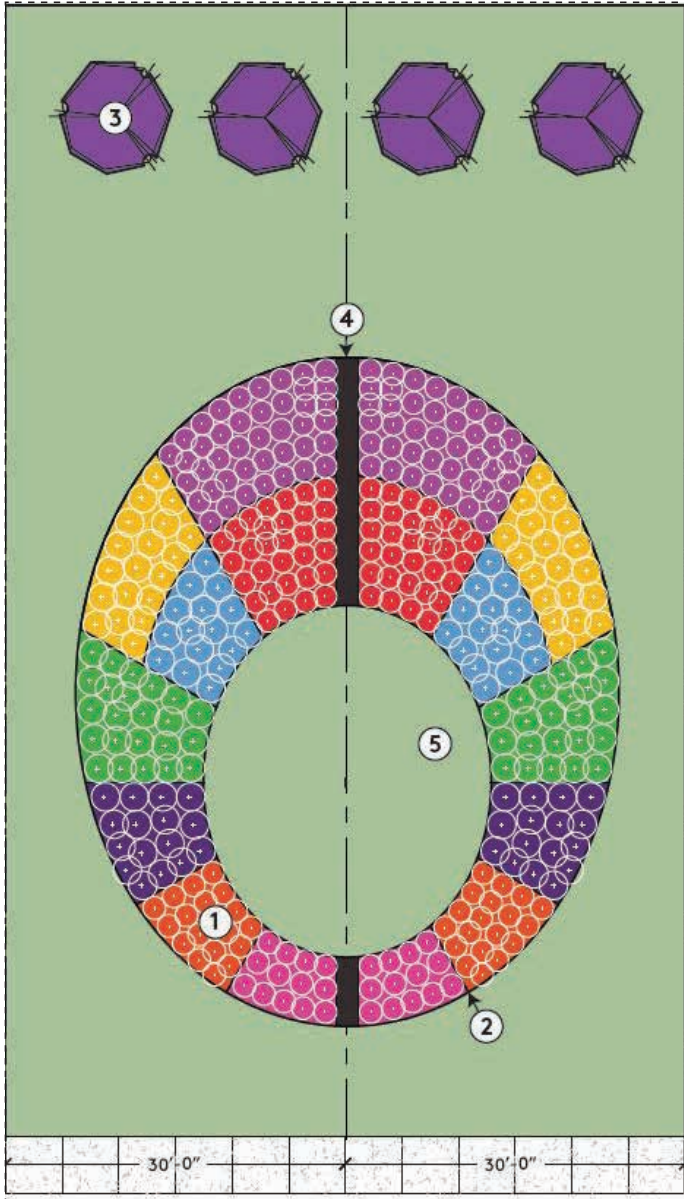


G LOT DESIGN: PERENNIAL PROPAGATOR



Do you want to strengthen your community through a local plant exchange and related education?

GRANT AMOUNT UP TO: \$10,000

The Perennial Propagator Lot Design features perennial plants that quickly spread and can be easily divided. This lot design is a great fit for anyone looking to build a regenerating neighborhood resource where plants can be divided and shared among a community. This perennial farm of sorts can grow over time and be used to help beautify a neighborhood.

DETAILS:

- Anticipated installation: Spring 2019

REQUIREMENTS:

- A long-term commitment to supporting a neighborhood plant exchange (five year min.)
- A committed volunteer group to with the planting and on-going maintenance

IDEAL FIT:

- This project is ideal for experienced gardeners
- A preference for at least two lots (or 60' of frontage)
- Nearby or on site secure storage for garden tools

ADDITIONAL REQUIRED RFP QUESTIONS: PERENNIAL PROPAGATOR

Please answer in a separate document and upload to Submittable with your proposal (.doc or .pdf file format).

- 1) What is your and your group's gardening experience?

- 2) What is your vision for neighborhood events and plant exchanges (during the spring and fall)?

- 3) What additional resources do you need to successfully maintain this lot design for years to come?

Volunteer

Professional

Volunteer + Professional



Perennial Propagator

Image Source: Pat Dumas, "Ruby Throated Hummer in Bee Balm 1." 04 July 2010 via Flickr, CC BY-NC-SA 2.0.



**working
with lots**

A FIELD GUIDE

HELLO

MY NAME IS

Perennial Propagator

The Perennial Propagator design features plants that easily spread or multiply. The perennials can be split, or divided, in the spring or fall and shared with others. With proper establishment and care, this investment allows you to produce new plants for years to come without spending a dime.

This lot design is ideal for a community group that would like to establish a regenerative resource of flowers to plant throughout their neighborhood. It is best suited for groups with experienced gardeners and a commitment to teaching others!

For more information refer to [DFC-lots.com](https://dfc-lots.com)

Planting : Sun To Part Sun



Red Velvet Yarrow⁶

Achillea 'Red Velvet'

12" Height x 60" Width

Blooms June - September

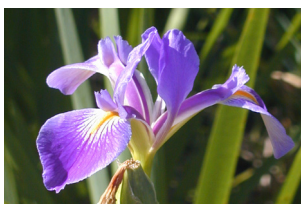


Lambs Ear¹

Stachys byzantina

6" Height x 30" Width

Silver Fuzzy Foliage

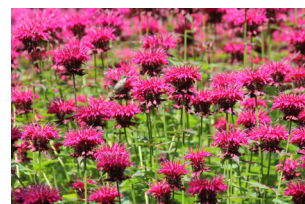


Blue Flag Iris³

Iris virginica

24" Height x 12" Width

Blooms May - June



Bee Balm⁴

Monarda fistulosa

24" Height x 28" Width

Blooms July - September

Additional Plant Species

Full Sun to Part Sun

- Cranesbill Geranium
- Creeping Thyme
- Day Lily
- Purple Cornflower
- Sedum 'Autumn Joy'
- Switch Grass

Part Shade to Full Shade

- Hosta 'Elegans'
- Solomon's Seal
- Lady Fern

Cost	\$50- 1,000	\$1,000 - 2,500	\$2,500 - 5,500	\$5,500 +
People	Volunteer		Professional	Volunteer + Professional
Experience	Beginner		Intermediate	Advanced
Upkeep	Low		Medium	High
Stormwater	Good		Better	Best
Location	Double Lot in Full Sun to Shade			

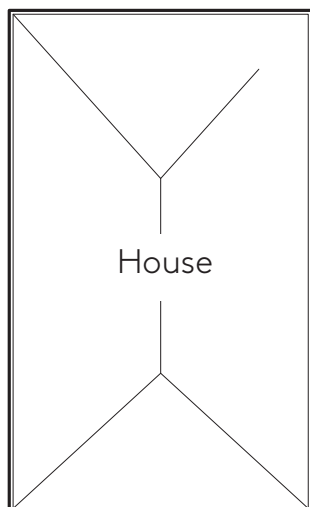
Perennial Propagator Lot Design

Alley

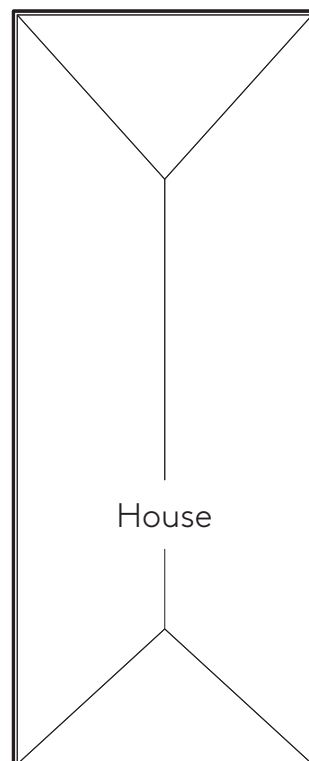
This is a draft design, more details will be developed soon!



Individual Plant



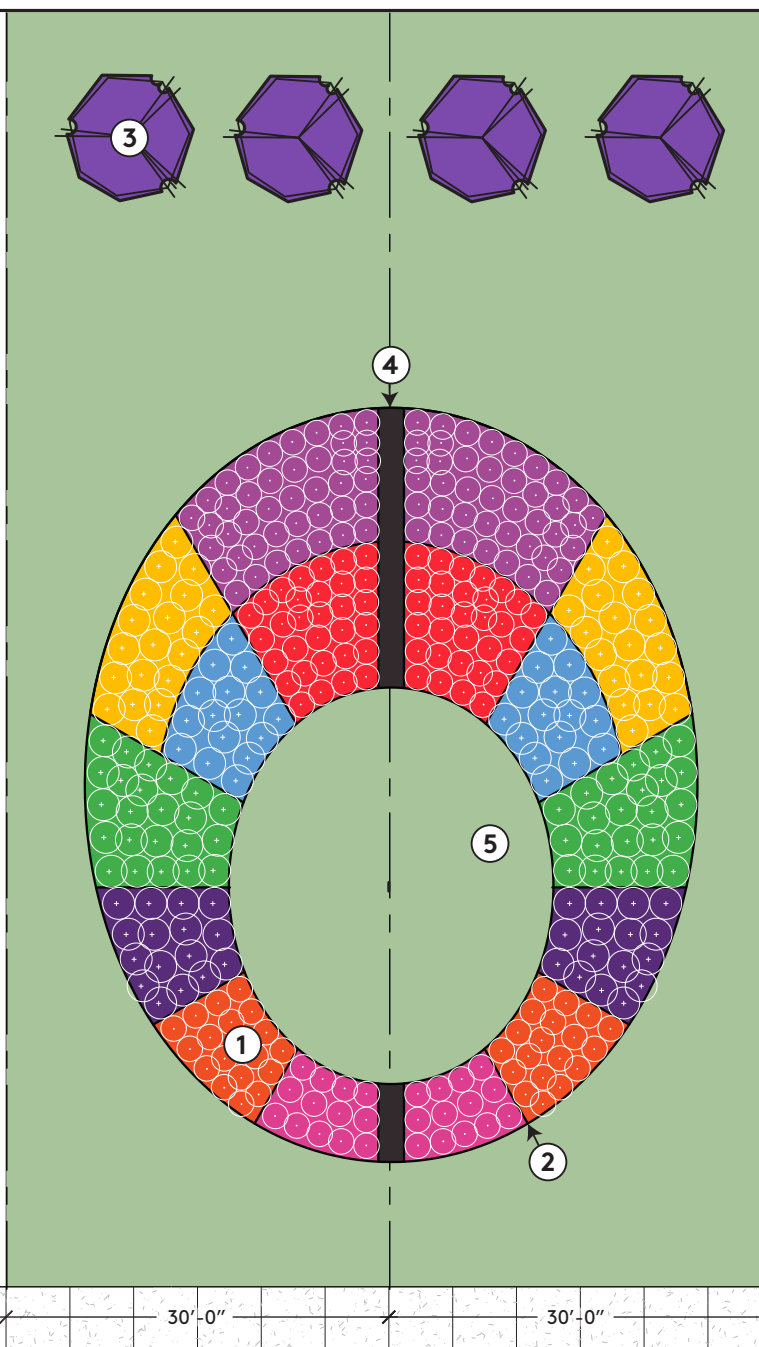
House



House

Property Line

Property Line



1 Perennials

2 Edging

3 Eastern Redbud Ornamental Trees

4 Mulch or Topsoil

5 Grass or Optional Groundcover