



JANET L. ATTARIAN

DEPUTY DIRECTOR

**CITY OF DETROIT PLANNING AND
DEVELOPMENT DEPARTMENT**



LAND + WATER WORKS FORUM

Sustainable Planning and Design

Planning and Development | March 2018

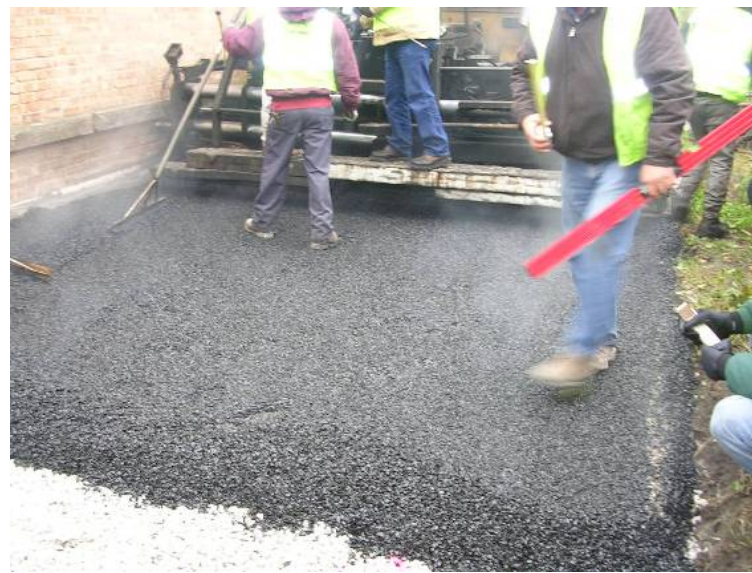
Sustainable design best practices in Chicago





Development of Permeable Asphalt + Concrete:

- Best Practices
- Material Testing
- Trail Batches



The Ground Tire Rubber Solution:

- Approx 600 tires recycled per alley
- Solved cohesion problem

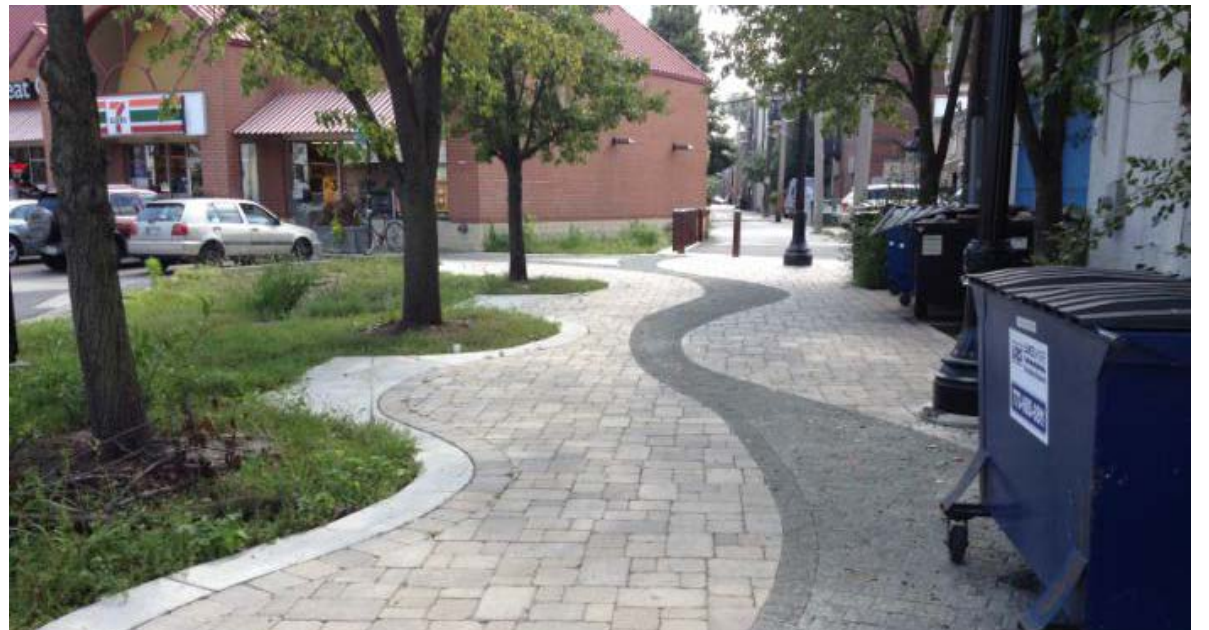


Alley with impermeable pavement and poor drainage.



Alley incorporating green alley principles.

Green Alley Program CHICAGO

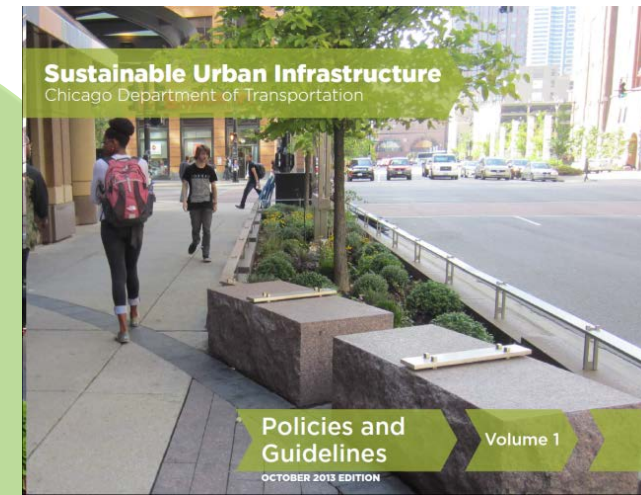


50+ GSI projects implemented - CHICAGO



**modal hierarchy
& mode share**

**ecological
services**



**Sustainable
Streets**

placemaking



Sustainable Design Guidelines CHICAGO



Typical Chicago Street

Pilsen Sustainable Street

Greenest Street in America - CHICAGO



Why is Green Infrastructure important for us?

I. Make our city beautiful + sustainable





II. Address flooding

A photograph of a vacant lot overgrown with tall grasses and wildflowers, with trees in the background under a bright sky. The text "III. We have a lot of vacant land" is overlaid in white, bold font across the lower portion of the image.

III. We have a lot of vacant land



Here's what we are doing



The **PUBLIC LANDS FRAMEWORK PLAN** will create a **strategic framework** and **coordinated approach** for the appropriate reuse of **publicly owned lands** in Detroit.

PUBLIC LANDS

City of Detroit
Urban Agriculture Ordinance
Abridged
February 2013

For more information contact:

Kathryn Lynch Underwood
313.224.6378
KathrynL@detroitmi.gov

Laura Buhl
313.224.3009
buhl@detroitmi.gov

2013

Green Infrastructure Vision
for Southeast Michigan

SEMCOG . . . Shaping the future of Southeast Michigan
Southeast Michigan Council of Governments

2014

Center for **COMMUNITY PROGRESS**
Vacant Spaces into Vibrant Places

October 2015

OPEN SPACE IN DETROIT
Key Ownership and Funding Considerations to Inform a Comprehensive Open Space Planning Process

Center for Community Progress Report to Detroit Future City Implementation Office
2015 Technical Assistance Scholarship Program (TASP) Recipient

A Center for Community Progress TASP Final Report

2015

Achieving an Integrated Open Space Network in Detroit
April 14, 2016

DETROIT FUTURE CITY

2016

DRAFT FOR PUBLIC REVIEW

2016 PARKS AND RECREATION IMPROVEMENT PLAN
EXPANDING RECREATION OPPORTUNITIES IN DETROIT NEIGHBORHOODS

Logos for GSD, City of Detroit, and Detroit Future City.

2017

PUBLIC LANDS - Our work builds off existing efforts



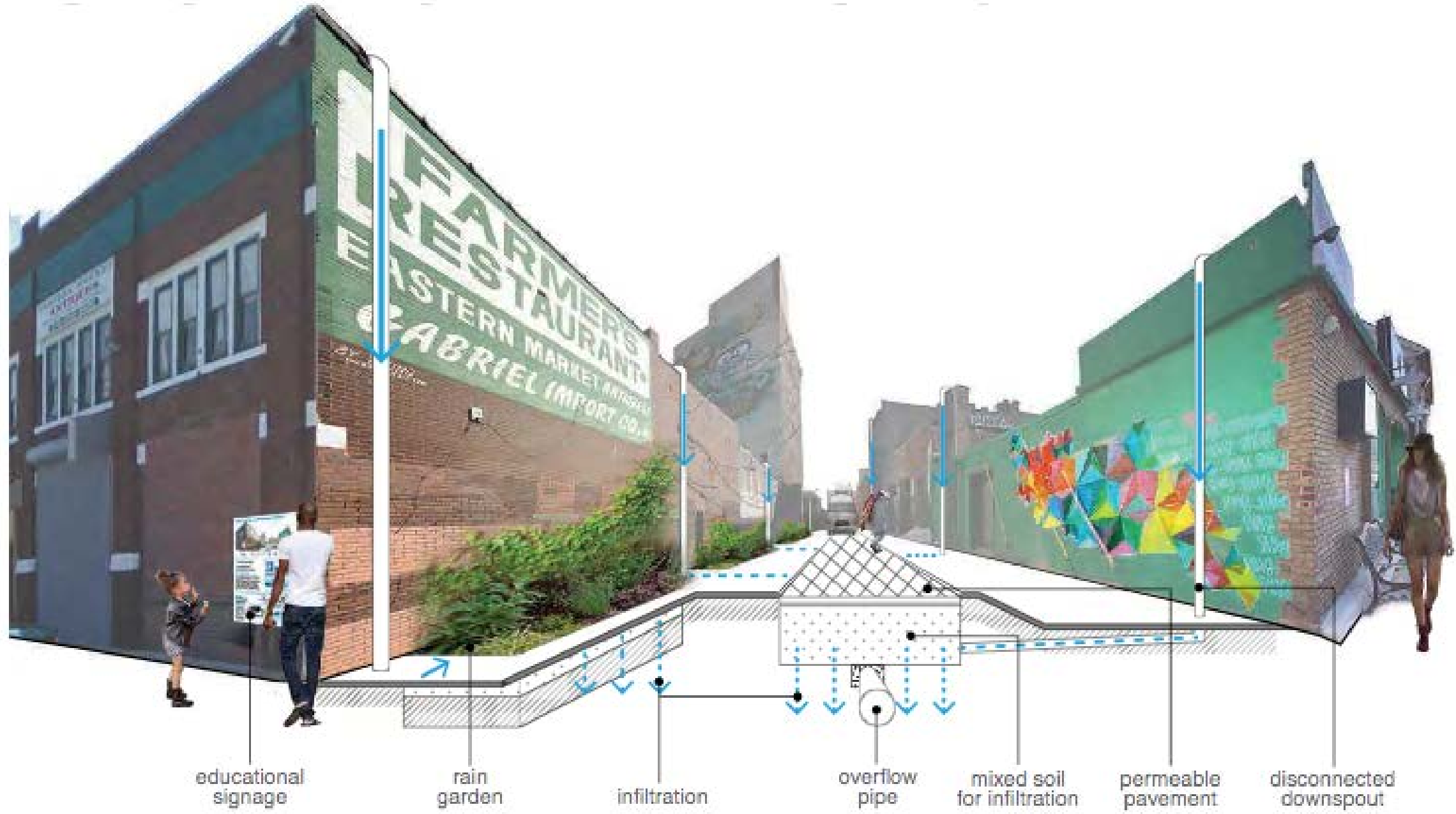
PUBLIC LANDS - community engagement



LANDSCAPES – Islandview / Greater Villages



STREETS - Kercheval



ALLEYS – Eastern Market



PARKS – Morningside GAPGAP Park design competition



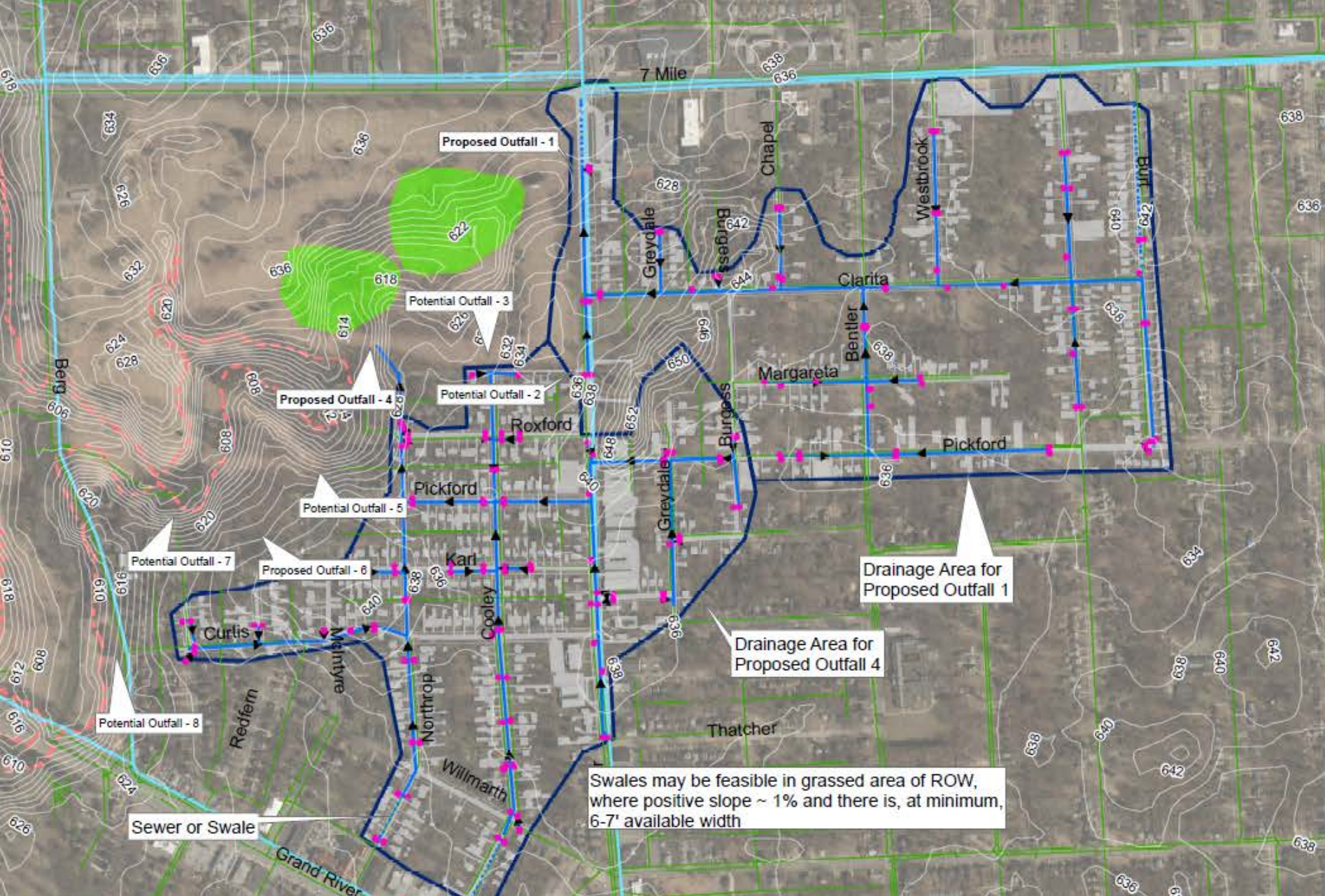
TRAILS - Joseph Campau Greenway



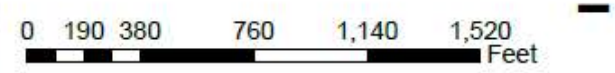
NEIGHBORHOODS

Jefferson Chalmers

Green Stormwater Infrastructure (GSI) Conceptual Improvements



- Contour - 2 ft
- Catch Basin
- Proposed Storm Sewer
- Proposed Roadside Swale
- Water Main >12"
- Combined Sewer Gravity Mains
- Proposed Drainage Area
- 100-year Floodplain (Zone A)
- Proposed GSI Practice
- Impervious Cover



	Drainage Area (acres)	Impervious Area (acres)
Outfall 1	92.1	29.6
Outfall 4	77.7	34.7

Outfall	Description
1	Direct path to park from Lahser; no visible property issues
2	Direct Path to park from Lahser; no visible property issues
3	Direct path to park from Cooley; no visible property issues
4	Direct path to park from Northrop; no visible property issues
5	Direct path to park from McIntyre; no visible property issues
6	Indirect path to park from Redfern; may be private property
7	Indirect path to park from Beaverland; may be private property
8	Direct path to park from Curtis; no adequate space available

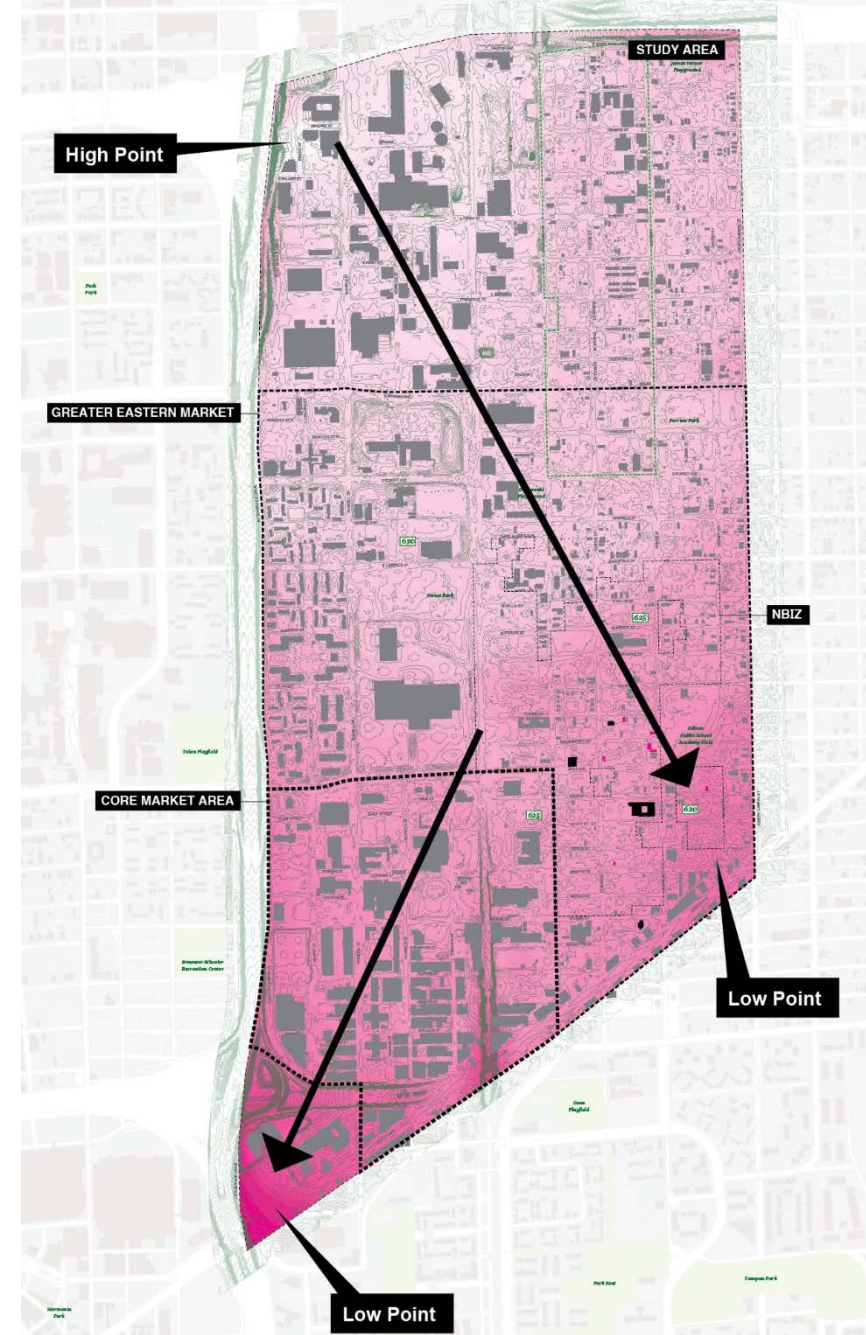
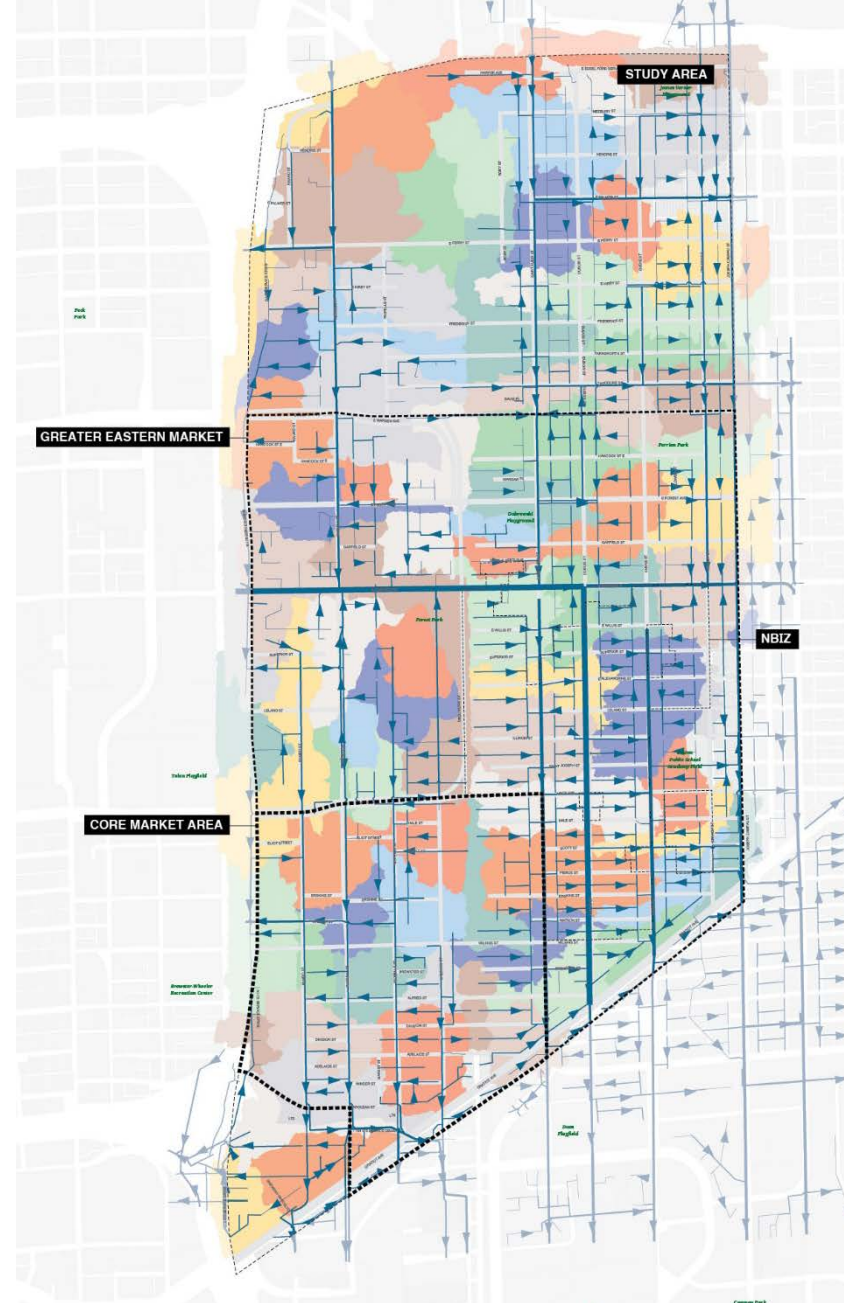
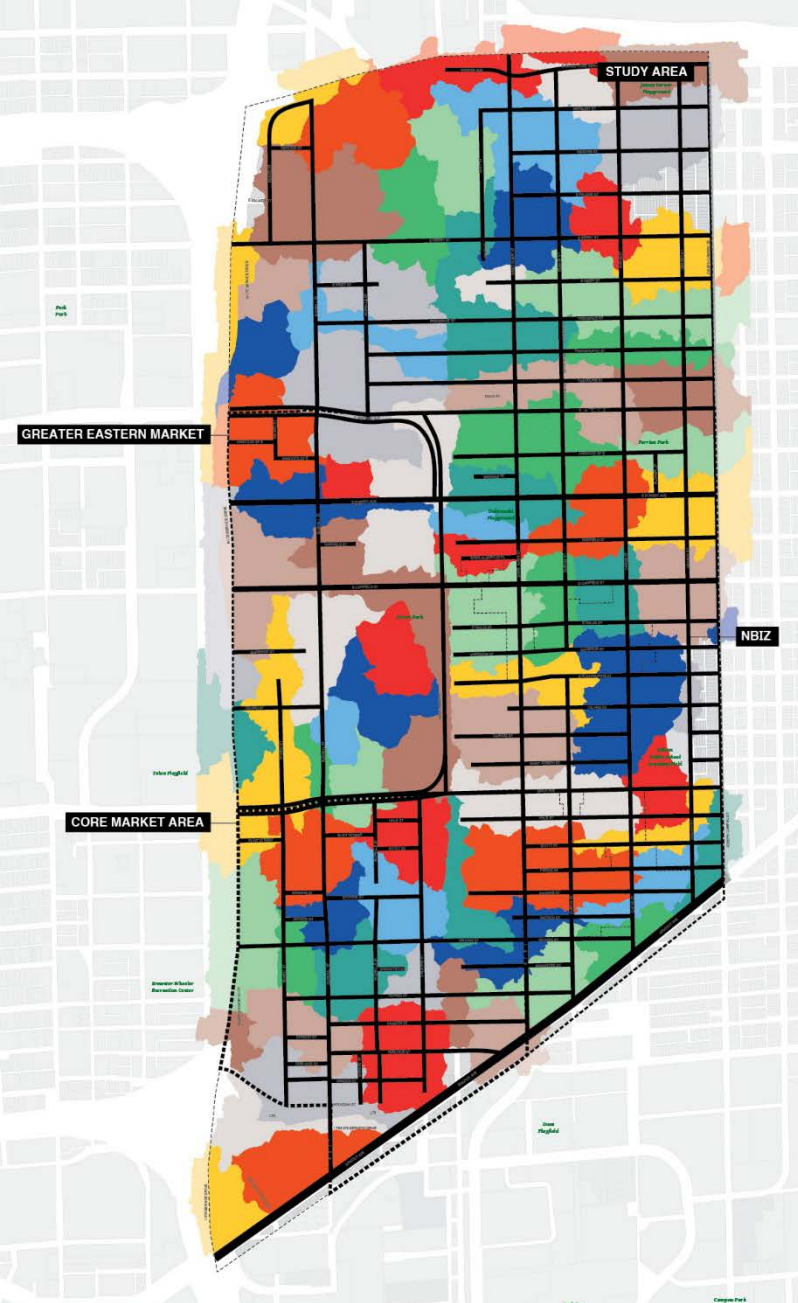
Swales may be feasible in grassed area of ROW, where positive slope ~ 1% and there is, at minimum, 6-7' available width

NEIGHBORHOODS – Rogell Park

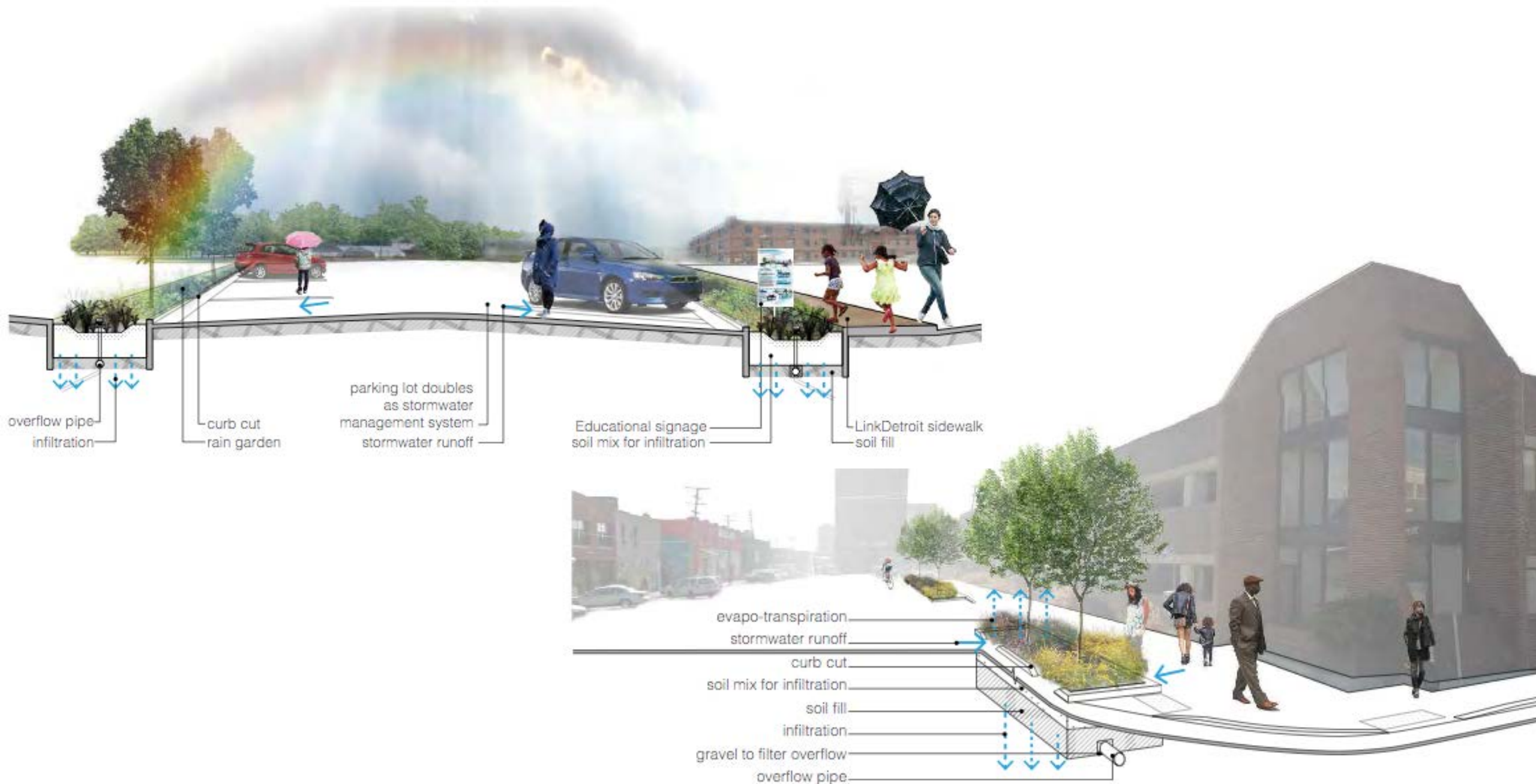
Note: Size and Configuration of the practice footprint to be determined



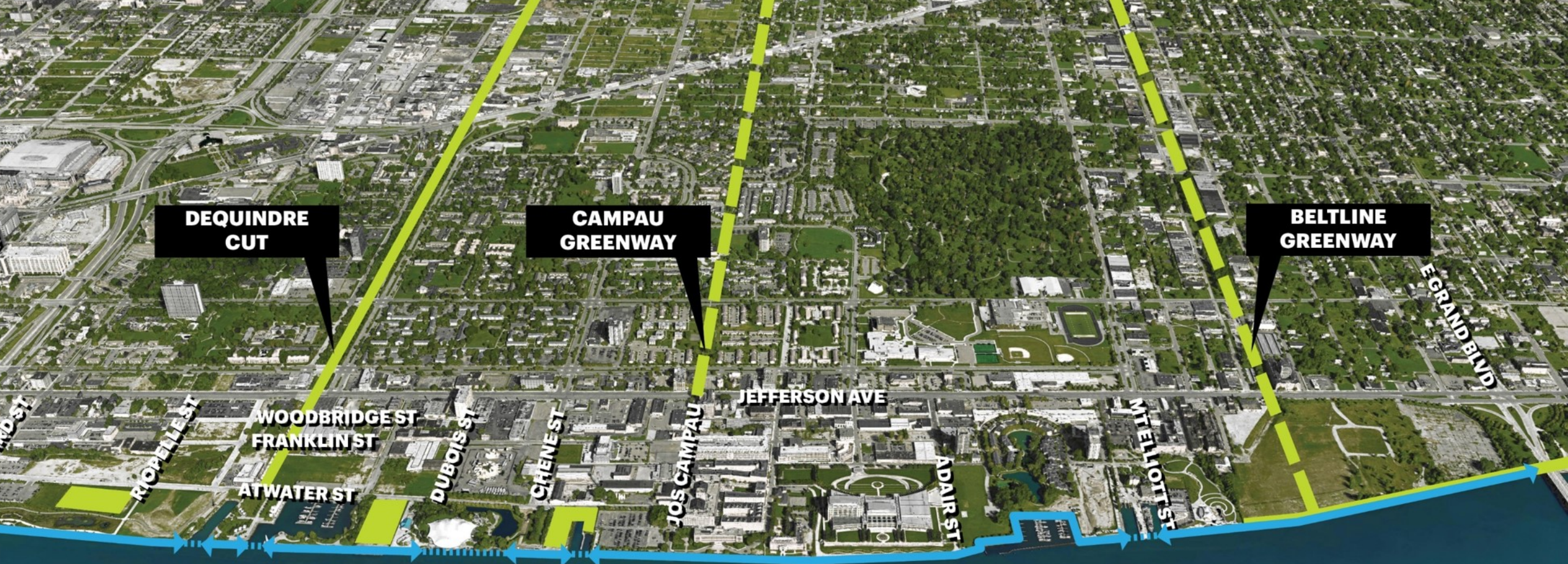
NEIGHBORHOODS – Rogell Park



NEIGHBORHOODS - Eastern Market



NEIGHBORHOODS - Eastern Market



DEQUINDRE CUT

CAMPAU GREENWAY

BELTLINE GREENWAY

WOOD ST

RIOPELLE ST

WOODBIDGE ST
FRANKLIN ST

ATWATER ST

DUBOIS ST

CRENE ST

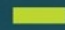
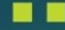
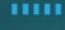

JOS CAMPAU

JEFFERSON AVE

ADAIR ST

MIELHOLT ST

E GRAND BLVD

- Existing greenway 
- Proposed greenway 
- New RiverWalk 
- Improved RiverWalk 

NEIGHBORHOODS - East Riverfront



NEIGHBORHOODS - East Riverfront

NEIGHBORHOODS - East Riverfront





VISION

THANK YOU!

Contact me at: attarianj@detroitmi.gov



LAURA SOLANO

PRINCIPAL

MICHAEL VAN VALKENBURGH ASSOCIATES, INC